

Oakland Park

Medway, MA

March 2023

GAR 2228 – CFP#3297



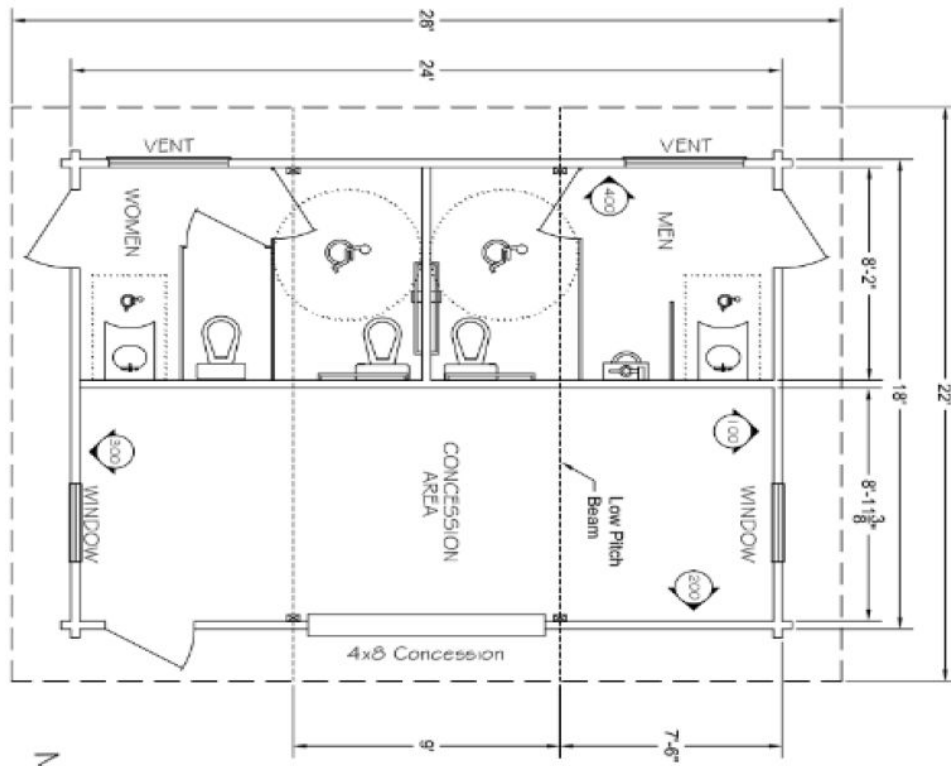
Install Date: Summer 2018

The Oakland Park project in Medway, MA is a wonderful Gothic Arch Restroom building. The building contains a large concession area and two fully outfitted restrooms. The exterior is finished with a beautiful chestnut stain and topped with Slate colored shingles.

Building Features:

- 30 Year Architectural Shingles
- Vitreous China Plumbing Fixture Package*
- Electrical Fixture Package*

* Optional upgrades included in design



This GAR building has 2 ADA compliant restrooms. A concession area divides the building in half.

This GAR building has 2 ADA compliant restrooms. A concession area divides the building in half.



GAR buildings can be ordered with an optional Vitreous China Fixture package which includes toilets and lavatories, flush valves and faucets, ADA handrails, mirror, soap and paper towel dispensers, toilet paper holder, waste basket, and water spigot. A similarly equipped Electrical Fixture Package is also available.

*Plumbing and electrical packages do not include piping, wiring, or fittings.