

# Lanape Park Skippack, PA

October 2022

PAC 7 – CFP#3560



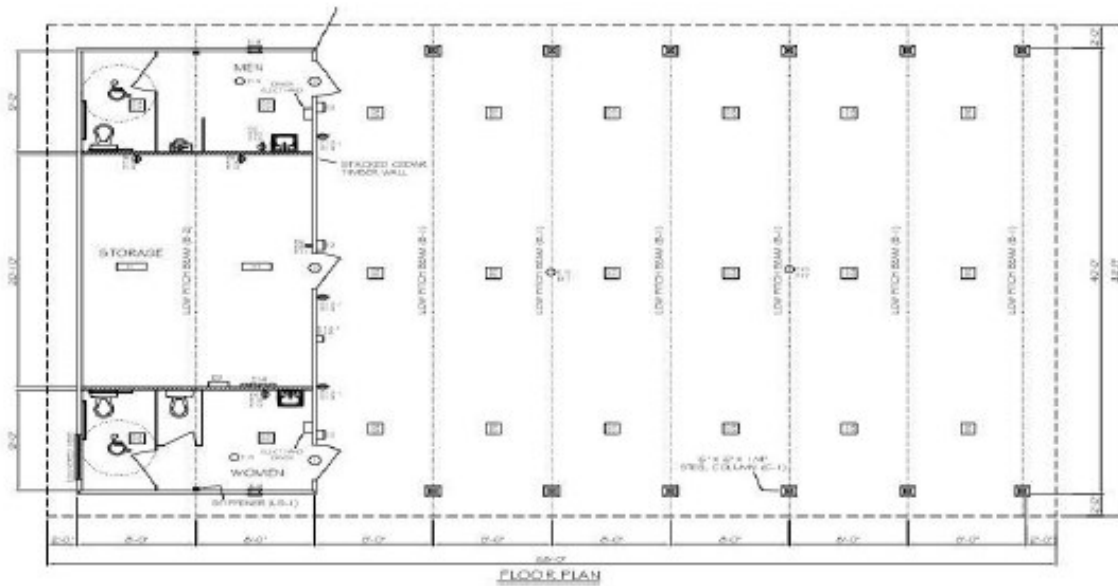
Install Date: Spring 2021

The Lanape Park project, located in Skippack, PA is an amazing Parkaire Activity Center 7. The building contains a large storage area, two fully outfitted restrooms, and a massive outdoor public gathering area. Visitors are covered and protected from the sun by a standing seam metal roof. This PAC building is a perfect addition to Skippack Township.

#### **Building Features:**

- Standing Seam Metal Roof\*
- Electrical Hand Dryers\*
- Stainless Steel Plumbing Fixture Package\*
- Electrical Fixture Package\*
- Power Exhaust Fan\*

\* Optional upgrades included in design



This PAC building has 2 fully outfitted restrooms. A large storage area divides the two restrooms.



PAC buildings can be ordered with an optional Vitreous China Fixture package which includes toilets and lavatories, flush valves and faucets, ADA handrails, mirror, soap and paper towel dispensers, toilet paper holder, waste basket, and water spigot. A similarly equipped Electrical Fixture Package is also available.

\*Plumbing and electrical packages do not include piping, wiring, or fittings.